



The Charles Darwin Walk follows the beautiful Jamison Creek south, arriving at the top of Wentworth Falls. Walkers can enjoy the beauty of the creek as it cascades down the frequent small waterfalls. The top of Wentworth Falls is a fantastic spot to rest, taking in wonderful views of the Jamison Valley and water tumbling over the cliffs. Well-managed and signposted, this track has bridges and boardwalk to help keep walkers' feet dry. It is a great walk for those visiting Wentworth Falls by public transport.

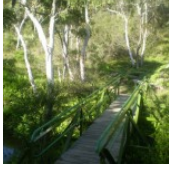
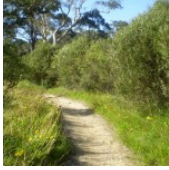
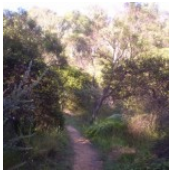
Length: 5.6 km
Time: 2 hrs
Climb: 189 m
Style: Return
Rating: Track: Moderate
Where: 1 km NW of Wentworth Falls
Transport: train car



Visit www.wildwalks.com for more info

Blue Mountains National Park

Side trips and Alternate routes mentioned in these notes are not included in the tracks overall rating, distance or time estimate. The notes only describe the side trips and Alternate routes in one direction. Allow extra time for resting and exploring areas of interest. Please ensure you and your group are well prepared and equipped for all possible hazards and delays. The authors, staff and owners of wildwalks take care in preparing these notes but will not accept responsibility for any inconvenience, loss or injury sustained by using these notes or maps. Please take care and share your experience through the website. GPS for start and end of this walk: -33.7097,150.3764



Paddy Pallin - Will your feet be happy? www.paddypallin.com.au



Will your feet be happy?

Come into Paddy Pallin for an expert boot fitting and we'll use 80 years of bushwalking experience to help you make the most of your experience.

Mention this ad and get a free Paddy Pallin club membership entitling you to 10% off plus other exclusive benefits.

Wentworth Falls Railway Station to Wilson Park 0.5km 5 mins

(From S) From Wentworth Falls Railway Station, this walk exits the station on the western side, on Station St, and turns left to head down to the Great Western Highway past the shops. At the highway, the walk crosses at the lights and turns right, heading down the hill along the foot path. This walk then turns left into Wilson Park soon after the colourful bus stop. The walk follows the footpath through Wilson Park. At the toilet block in the centre of the park, the walk tends slightly more to the left until coming to a large archway entrance to the Charles Darwin Walk, near the tennis courts.

Wilson Park to Int of Charles Darwin Track and Wentworth Falls Fire Station Trail 0.2km 4 mins

(From 0.49 km) Continue straight: From the south-east corner of Wilson Park (near the tennis courts), this walk heads under the large wooden archway signposted as 'Charles Darwin Walk'. The walk follows the track passing a blue sign pointing to 'Wentworth Falls Waterfall' and soon after crosses the creek on a small wooden bridge. On the other side of the creek the track meanders through the open pine forest. After heading up some steps the track comes to an intersection with a sign pointing back to 'Wilson Park' (the steps on the left head up to Page Ave).

Continue straight: From the intersection, this walk passes the blue sign (on the right) and turns right down the steps to immediately come to an intersection just before the bridge (and a 'Charles Darwin Walk' sign).

Int of Charles Darwin Track and Wentworth Falls Fire Station Trail to Int of Charles Darwin and Fletcher St Tracks 1.2km 20 mins

(From 0.7 km) Turn left: From the intersection, this walk follows 'Charles Darwin walk' sign downstream, keeping the creek on the right. The track meanders alongside the creek over some timber platforms and through a lovely Banksia grove. Soon the track heads under a pipe bridge and comes to a clearing and intersection.

Continue straight: From the intersection near the pipe bridge, this walk follow the 'Wentworth Falls Waterfall' sign downstream (keeping the creek on the right). The walk soon passes another track (that crosses the creek using a small bridge on the right) and then passes a bush regeneration sign to leave the clearing. The track meanders alongside the creek for a while before heading down some stairs and crossing the creek on a bridge. On the other side the walk passes a bench seat and then comes to an intersection with the signposted 'Parkes Street' track (on the right). From this intersection, this walk heads downstream (keeping the creek to the left). The walk crosses the creek on a foot bridge and follows the creek closely soon passing a beautiful set of cascades.

After cascades, the walk goes down a steep section of stairs and once again crosses the creek. The track continues along a section of boardwalk before joining up with a track that continues beside the creek. This goes along a mixture of boardwalk and bush track until coming to an intersection with a track, with 'Fletcher St' and 'Falls' signs.

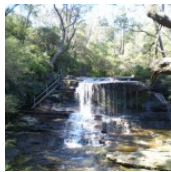
Int of Charles Darwin and Fletcher St Tracks to Int of Charles Darwin and Weeping Rock Tracks 0.8km 10 mins

(From 1.87 km) Continue straight: From the intersection, this walk follows the creek downstream along a mixture of bush track and boardwalk. The track continues down until crossing two small creeks. Soon after these two small creeks, the track comes to an intersection, with 'Wentworth Falls' and 'National Pass Trail' signs.



Int of Charles Darwin and Weeping Rock Tracks to Weeping Rock waterfall 0km 1 mins

(From 2.65 km) Veer left: From the intersection, this walk heads down the steps following the 'Weeping Rock Circuit' sign to the creek a short distance away. Soon the track comes beside Jamison Creek, a lovely flat section of the creek on top of the waterfall. The track continues downstream and across a slippery rockshelf and down a staircase beside the falls. At the bottom of the stairs is another slippery rock platform and a pool at the bottom of Weeping Rock waterfall.



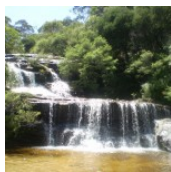
Weeping Rock

Weeping Rock is a waterfall on Jamison Creek, upstream of Wentworth Falls in the Blue Mountains National Park. The water falls over the wide circular top overhang, to then cascade down the rocks to a pool below. A staircase beside the falls helps walkers view this waterfall from different angles. This is a nice cool spot on hot days. The rocks are slippery and there are no fences, care is needed.



Weeping Rock waterfall to Int of Weeping Rock and Wentworth Falls Tracks 0km 1 mins

(From 2.69 km) Continue straight: From the bottom of Weeping Rock waterfall, this walk heads downstream (keeping the creek to the left), up some steps and passes another great view of Weeping Rock. After passing between some large rocks, the walk comes to a 3-way intersection, with a sign pointing back to 'Weeping Rock Circuit' and 'Darwins Walk'.



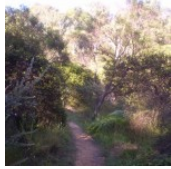
Int of Weeping Rock and Wentworth Falls Tracks to Top of Wentworth Falls 0.1km 1 mins

(From 2.73 km) Turn left: From the intersection, this walk follows the 'Wentworth Falls' and 'Wentworth Pass' signs down the steps. The track soon comes to a nice view of Jamison Creek, where it continues to wind down the hill and open up at a fenced rock platform at the top of Wentworth Falls. Here the walk crosses Jamison Creek using the stepping stones, to reveal a lovely waterhole and Queen's Cascades (the creek may be impassable after rain). This is the top of the Wentworth Falls.



Queen's Cascades

Queen's Cascades are a lovely set of falls on the Jamison Creek at the top of Wentworth Falls. The creek heads down the wide, two-stage cascades into a sandy pool. From the pool, the water flows between the stepping stones, under the fence and down the very tall Wentworth Falls. There are also great views to Sublime Point across the valley.



This is a 'Return' style walk - retrace your steps back to the beginning when you are ready.

A list of paper topographical maps that cover this walk

[Katoomba](#) 1:25 000 Map Series

Katoomba 1:100 000 Map Series



Nearby outdoor and camping stores

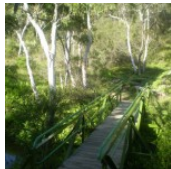
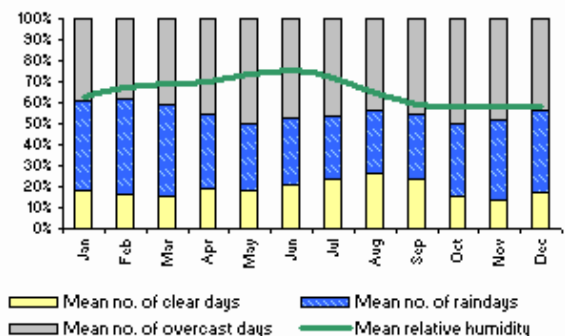
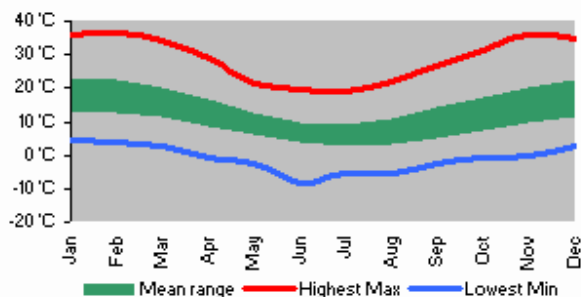
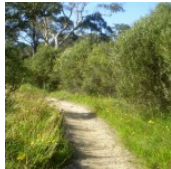
Summit Gear 80- Bathurst Rd Katoomba (02) 4782 3018

Paddy Pallin 166 Katoomba St Katoomba (02) 4782 4466

Summit Gear 11 Ross St Glenbrook (02) 4739 4373

Boots Great Outdoors Shop 25 Home Centre Wolseley St Penrith (02) 4733 5744

Kangaroo Tent City Cnr Mulgoa & Blaikie Rds Penrith (02) 4733 4111



AN EXTRA 1/2 SIZE

THE DIFFERENCE BETWEEN
A GOOD EXPERIENCE
AND A BAD ONE

EXPERIENCE
IS EVERYTHING

Paddy Passen
SINCE 1950

Map Scale 1 km

